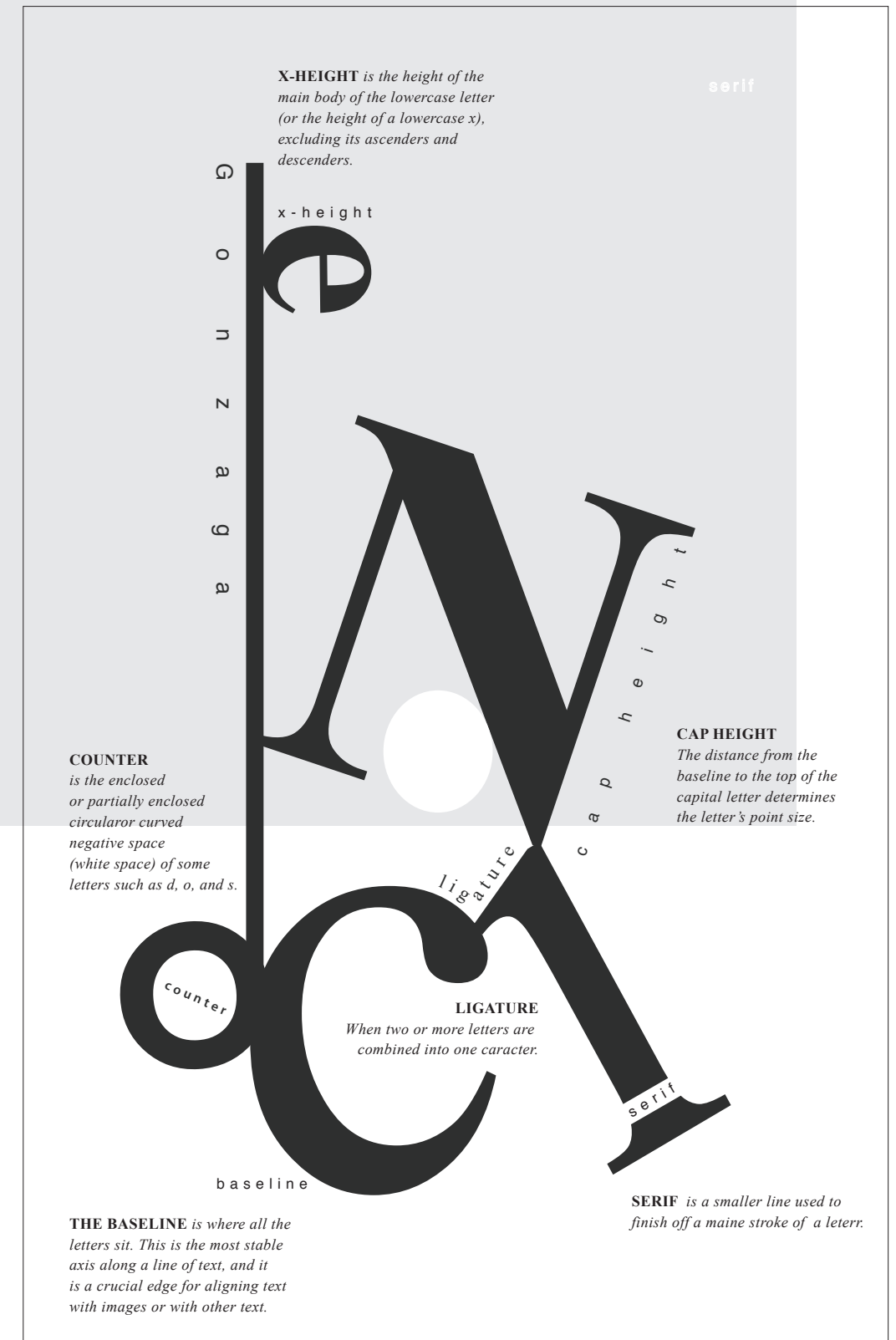




type anatomy poster

Analysis of individual letter structure, an “anatomy” of letterforms. Six specific letter parts/features indicated visually; presenting a piece that is both effective at a distance as well as useful as a reference.

Expression restricted to purely typographic, predominant visual elements are type based—no falling leaves or angels. Colors, shapes, lines—no illustrations or photographs. Distortion of type is not permitted (ever); stroking text and the use of drop-shadows must at all times be avoided!



menu before

